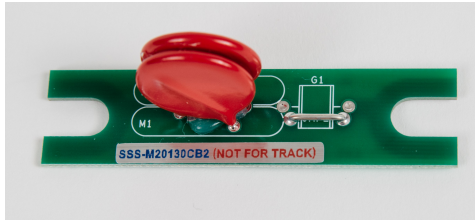


Model SSS-M20130CB2

Site-Specific Solutions, Inc

Line-to-Ground (L-G) or Line-to-Line (L-L) Lightning Protection Assembly



MOV Line-to-Ground or Line-to-Line Lightning Protection Assembly

The **Model SSS-M20130CB2** provides Line-to-Ground (L-G) or Line-to-Line (L-L) Lightning Protection on higher voltage power and signal line pairs that have a L-L maximum voltage of 340VDC or 260Vrms.

Highlights:

- Components are mounted to a printed circuit board that is form and fit compatible with a standard lightning arrester.
- Dual High-Energy 20mm MOVs
- Components are UL Listed
- Robust and cost effective L-G Protection solution for Non-Vital higher voltage signal, power and communication lines
- Mounts on standard AAR terminal blocks (not supplied) with 2-3/8 in. center-to-center post dimensions (standard for lightning arresters) or any AAR terminal block strips that are positioned to accept a standard lightning arrester spacing
- Utilizes open slots at the ends of the circuit board for mounting flexibility and easy maintenance
- All copper traces are on the underside of the board to prevent accidental shorting
- Connections to the AAR Posts are on the underside of the circuit board
- Used as Line-to-Ground (L-G) or Line-to-Line (L-L) protection where the maximum voltage across the device does not exceed 340VDC or 260Vrms
- **Not** for track-wire L-G or L-L protection

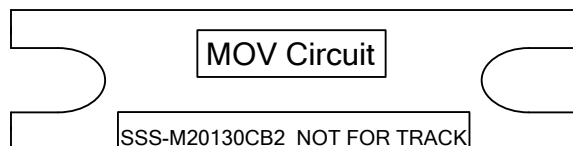
Electrical Specifications:

- Used as Line-to-Ground (L-G) and Line-to-Line (L-L) protection
- Maximum continuous applied DC voltage (across the device) = 170VDC
- Maximum continuous applied AC voltage (across the device) = 130VRMS
- 1mA DC Conduction Voltage Range (steady energy applied) = 184 to 226VDC
- Peak Current Handling Capability = >15kA (8X20usec. Waveform)
- Energy Handling Capability > 150 Joules
- Typical Capacitance = 1900pF
- Operating Temperature = -40°C to +70°C
- Clamping Voltage = 340Vpeak @ 100A

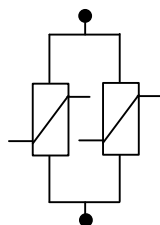
To order with standard 2-post AAR Terminal Block (2-3/8 in. centers) use part number SSS-M20130CB2-TB

Dimensions:

Overall Circuit Board
3/4 inch X 3 inch



Actual Size



Schematic